



请承认书

Version No. : V2.0

常州昊翔电子有限公司
 Changzhou HaoXiang Electronic Co., LTD
 客户名称
 CUSTOMER NAMED : _____
 产品名称
 COMMODITY : SMD Speaker
 产品型号
 MODEL NO : TDA-M1010KC8D40
 客户料号
 PART NO : _____

审核	秦皓	主办	唐俐雅 Nov.14,2018
----	----	----	-----------------

客户承认栏			
承认		拒收	

常州昊翔电子有限公司

常州声翔电子有限公司

常州公司：

江苏省常州市戚区潞城镇富民路 286 号

TEL:86-519-8363089 13585451311

FAX:86-519-88353844

E-mail: sales@tda-buzzer.com sales2@tda-buzzer.com

南通工厂：

江苏如皋市郭元镇工业园辰翔工业区

TEL:86-513-87910588 871919168

FAX:86-513-87915598

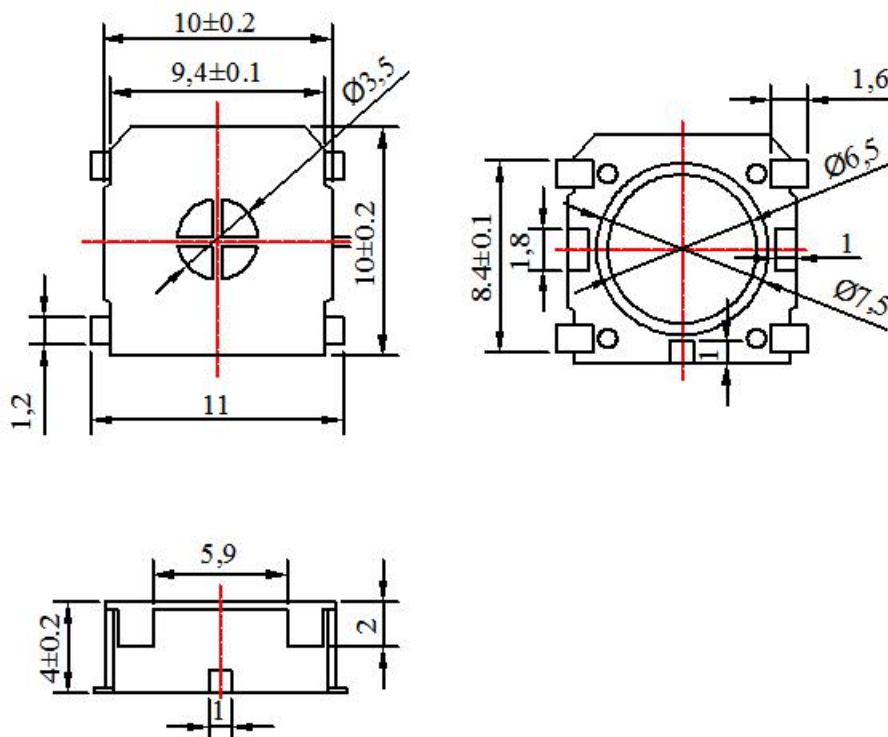
A. MODEL: TDA-M1010KC8D40

B. SPECIFICATION

Test condition: Temperature: 15~35°C Related Humidity:25~75% (GB/T9396-1996)

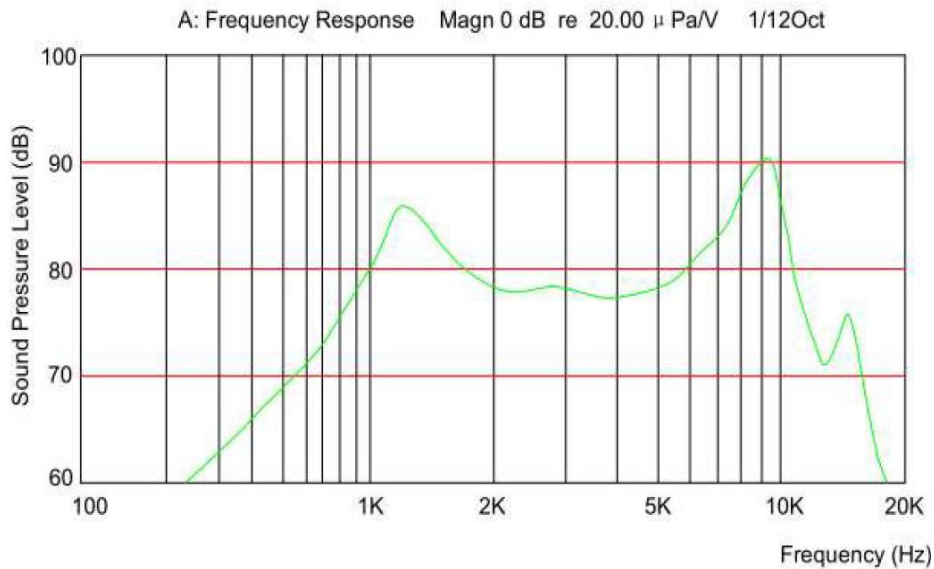
No.	Item	Specification	Condition
1	Dimension	10 x 10 x H4.0mm	
2	Weight	1.2±0.2g	
3	Impedance	8±15%Ω	At 20°C
4	DC Resistance	7.6±15%Ω	At 20°C
5	Output Sound Pressure Level	86±3dB(0.1M,1W)	Average at 1.6k,2.0k,3.2kHz
6	Response Frequency	1700±15%Hz	
7	Frequency Range	F0~20K	Average SPL 10dB .
8	Distortion	10% Maximum	At 1.0kHz, 0.1W,0.1m
9	Magnet	NdFeB	
10	Power Rating	Normal: 1.0W Maximum: 1.2 W	Sine Wave
11	Operating temperature	-30~ +85°C	
12	Storage Temperature	-40~ +105°C	
13	Abnormal Sound test	Must be Normal Tested By 2.83Vrms	Sine Wave, no buzzes and rattles
14	RoHS	The Speaker is RoHS compliant.	

C. APPEARANCE DRAWING



Unit: mm Tolerance : ± 0.2 mm

D.FREQUENCY RESPONSE



E. MEASURING METHOD(SPEAKER MODE)

E-1. Test Condition

(a) STANDARD :

Temperature : 15 ~ 35°C, Relative humidity : 45% ~ 85%,

Atmospheric pressure : 860mbar to 1060mbar

(b) JUDGEMENT :

Temperature : 20±3°C, Relative humidity : 60% ~ 70%,

Atmospheric pressure : 860mbar to 1060mbar

E-2. Standard Test Fixture

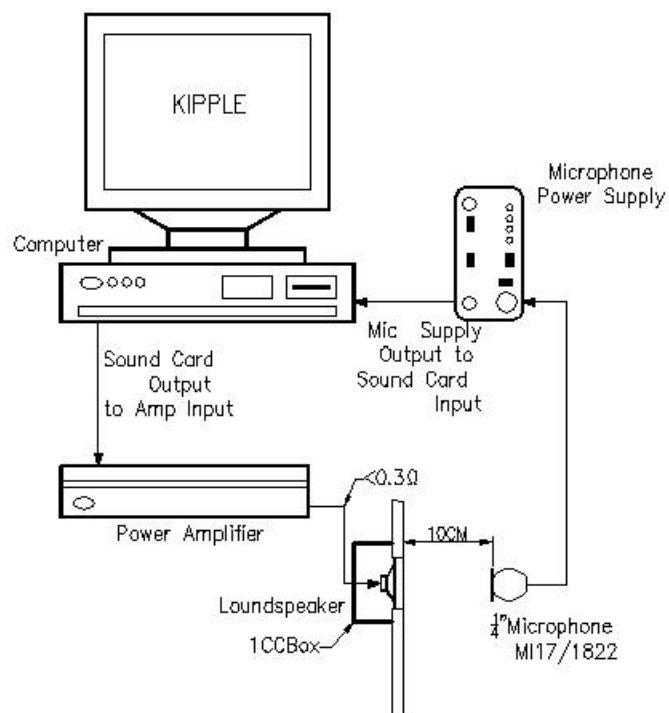
1. Input Power : 0.1W(0.89V)

2. Zero Level : -dB

3. Mode : SPEAKER

4. potentiometer Range : 50dB

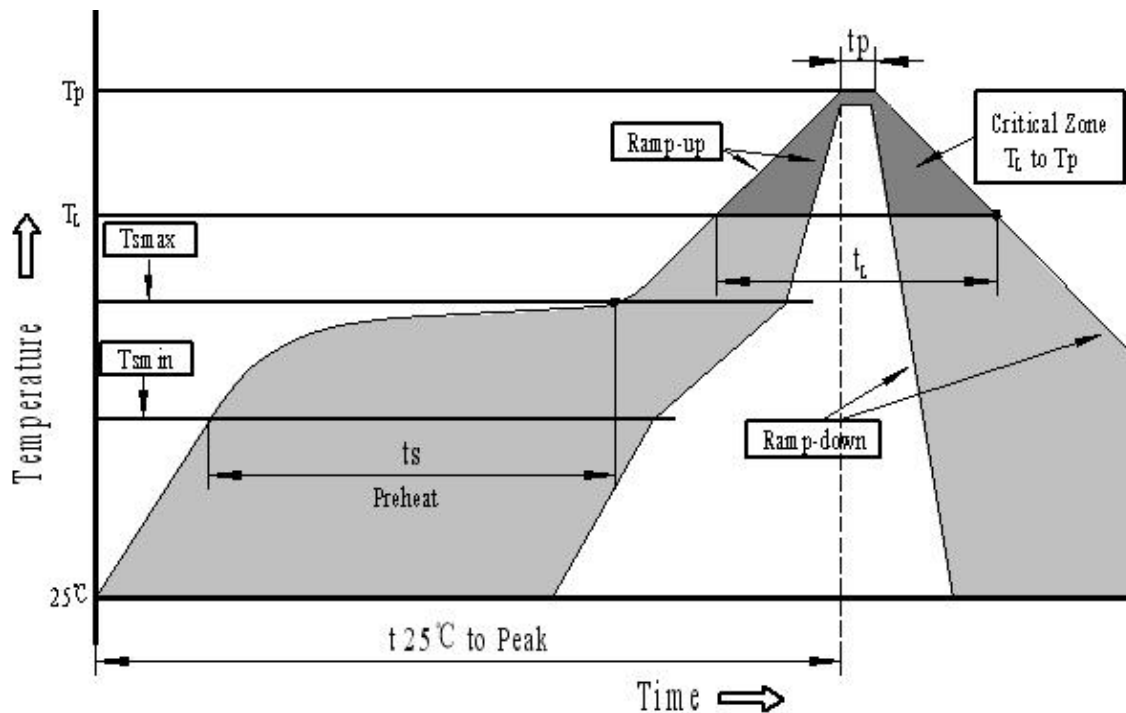
5. Sweep Time : 0.5sec



F. RELIABILITY TEST

No.	Item	Condition	Evaluation standard
1	Operating test	Must be normal at 0.2W	After each test, receivers should be measured after 2hrs exposed in normal temperature, all measurements should be in $\pm 3\text{dB}$ deviation than initial measurement. After each test all specification must be satisfied in this condition
2	Load test	1.0 W White noise is applied for 96hours	
3	High temperature test	Keep sample at $105 \pm 3^\circ\text{C}$ for 96 hours	
4	Low temperature test	Keep sample at $-40 \pm 3^\circ\text{C}$ for 96 hours	
5	Humidity test	Keep sample with 90-95% R.H. at $40 \pm 3^\circ\text{C}$ for 96 hours	
6	Drop test	Drop sample in box on 20cm thickness wood board 3 directions for 10 times, Height: 75cm.	

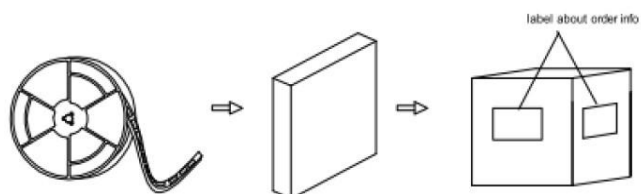
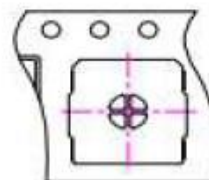
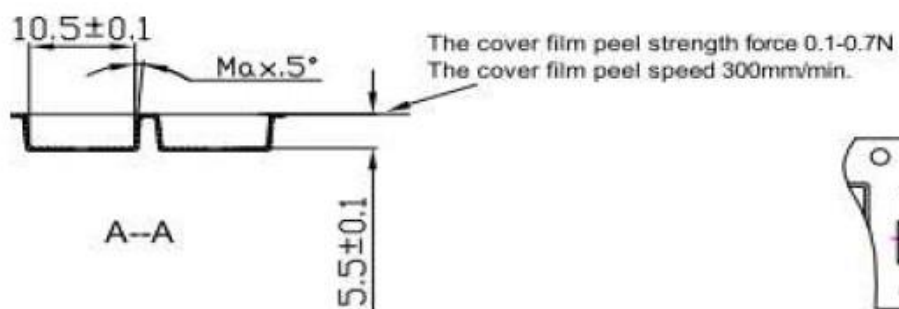
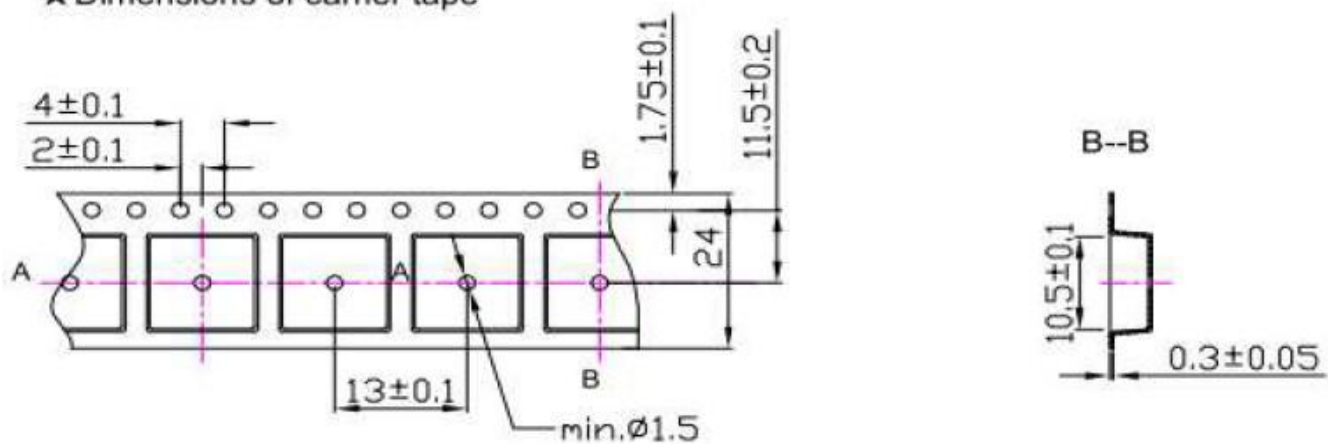
G. RECOMMENDED TEMP.PROFILE FOR REFLOW OVEN



Profile Feature	Pb-Free Assembly
Average ramp-up rate(T_L to T_p)	$3^\circ\text{C}/\text{second}$ max.
Preheat	
-Temperature Min. (T_{smin})	150°C
-Temperature Min. (T_{smax})	200°C
-Temperature Min. (t_s)	$60 \sim 180$ seconds
T_{smax} to T_L	
-Ramp-up Rate	$3^\circ\text{C}/\text{second}$ max.
Time maintained above:	
- Temperature (T_L)	217°C
-Time (T_L)	$60 \sim 150$ seconds
Peak temperature (T_p)	$245^\circ\text{C} +0/-5^\circ\text{C}$
Time within 5°C of actual Peak temperature (t_p)	6 seconds max.
Ramp-down Rate	$6^\circ\text{C}/\text{second}$ max.
Time 25°C to Peak Temperature	8 minutes max.

H. PACKING STANDARD

★ Dimensions of carrier tape



800pcs/reel
 5reel/carton
 4000 pcs/carton in total
 carton size 38x28x37cm
 12carton/tray
 tray size 85x77x74cm

